

# Client Certificate Import Manual

Rev. 1.9

**【 INDEX 】**

This is a user manual for importing the client certificate for VPN under the following terminal environments.

- [Windows 7](#) . . . . . [P 2](#)
- [Windows 8.1](#) . . . . . [P 8](#)
- [Windows 10](#) . . . . . [P 14](#)
- [Mac OS](#) . . . . . [P 20](#)

If you want to remove the imported certificate, check the following.

- [Windows 7](#) . . . . . [P 6](#)
- [Windows 8.1](#) . . . . . [P 12](#)
- [Windows 10](#) . . . . . [P 18](#)
- [Mac OS](#) . . . . . [P 22](#)

This user manual must be executed by users with **administrative authority**.

## 【Windows 7】

### Client Certificate Import Manual

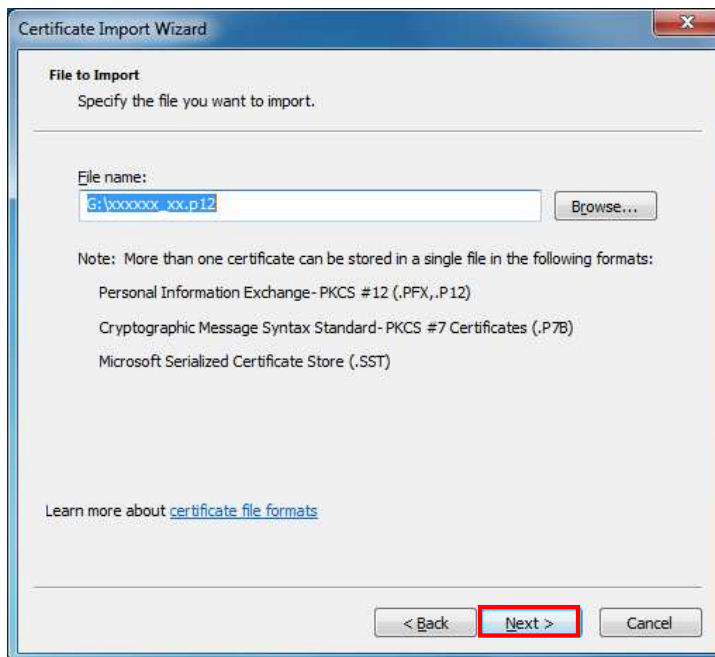
Double click the certificate file distributed by the administrator.



The **Certificate Import Wizard** will appear. Click **Next**.



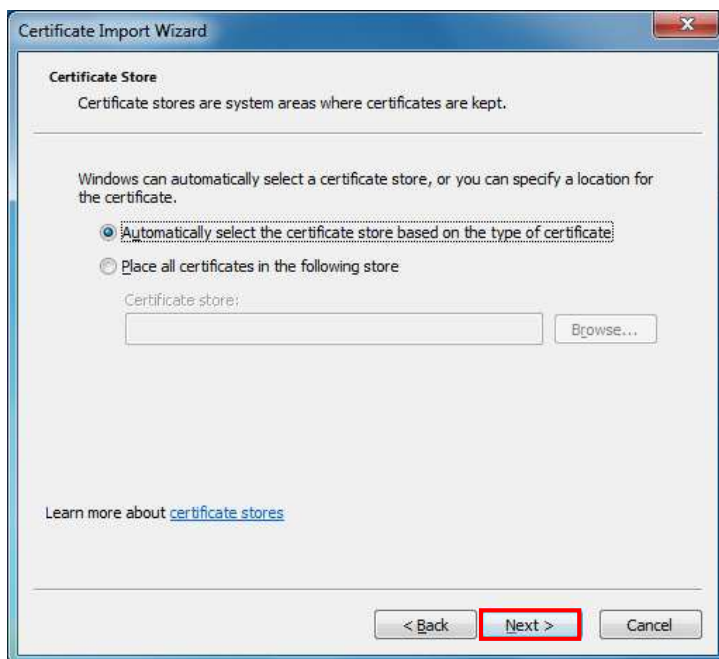
The certificate will be stored in the location specified. Click **Next**.



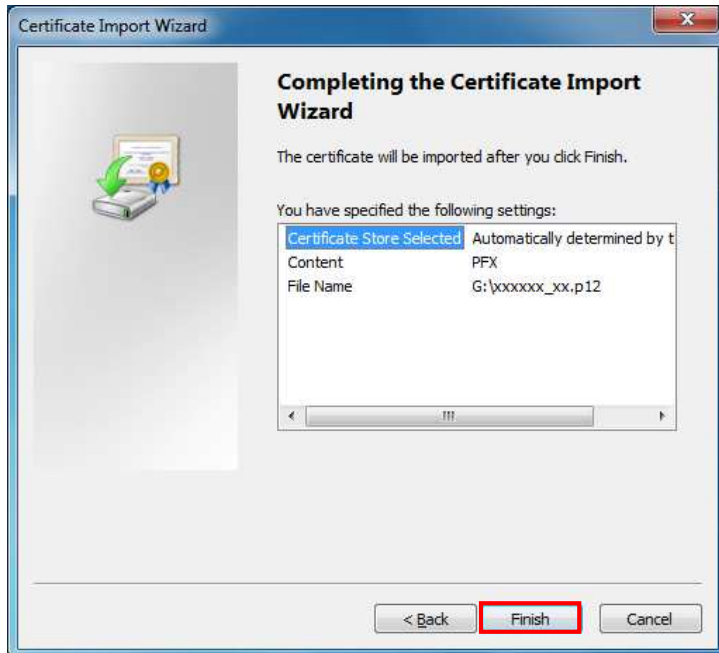
Enter the password you received with the certificate and click **Next**.



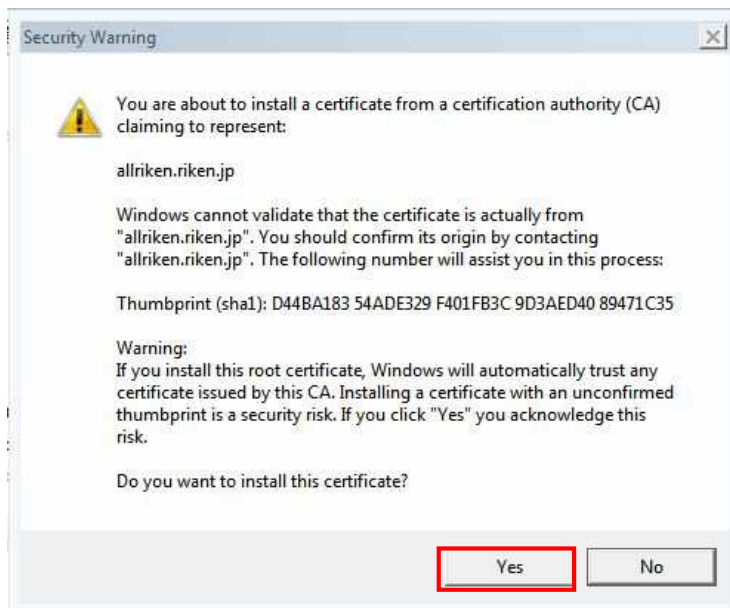
Automatically select the certificate store... should be selected. Click **Next**.



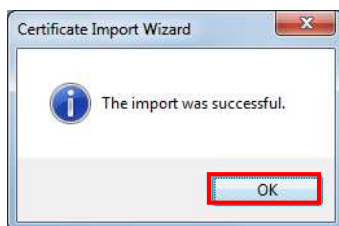
Finish the import wizard by clicking **Finish**.



A **security warning** will appear. Click **Yes**.



The certificate has been imported. Click **OK**.

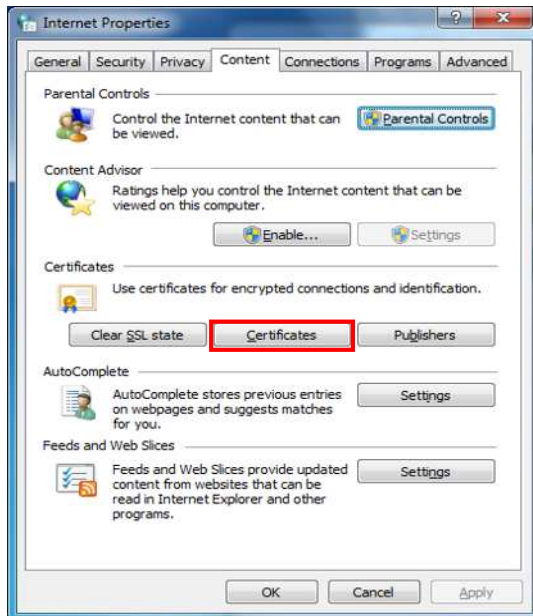


## Client Certificate Delete Manual

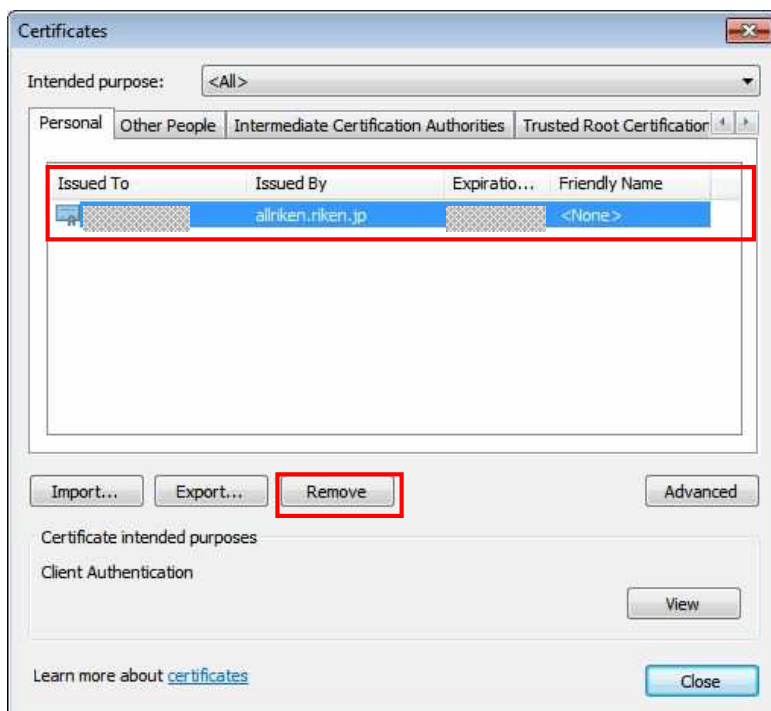
Open Internet Options.

Click on **Start->Control Panel->Network and Internet** and click **Internet Options**.

Select the **Content** tab and click **Certificates**.

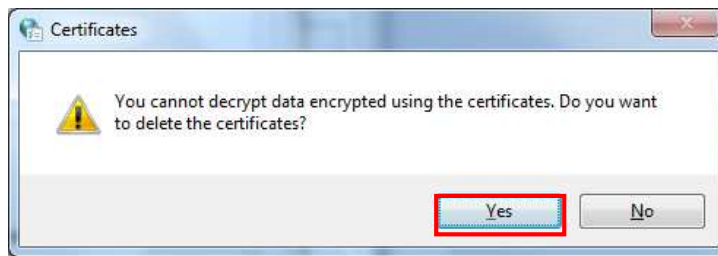


Select the certificate issued by **allriken.riken.jp** in the **Personal** tab, and click **Remove**.



## Windows 7

Click **Yes**.





## 【Windows 8.1】

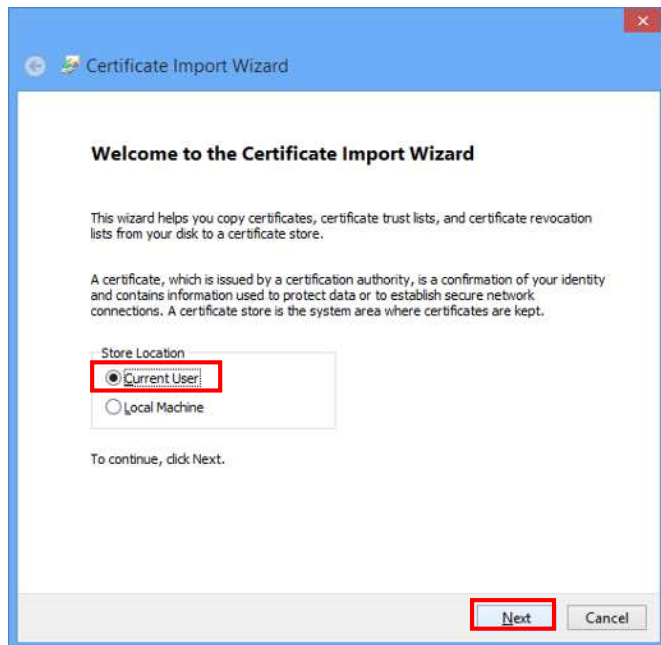
### Client Certificate Import Manual

Double click the certificate file distributed by the administrator.



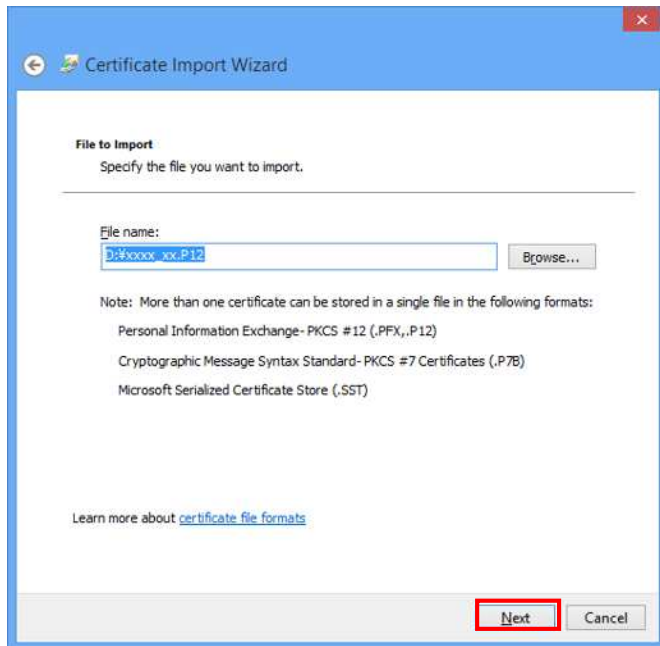
The **Certificate Import Wizard** will appear.

**Current User** should be selected. Click **Next**.

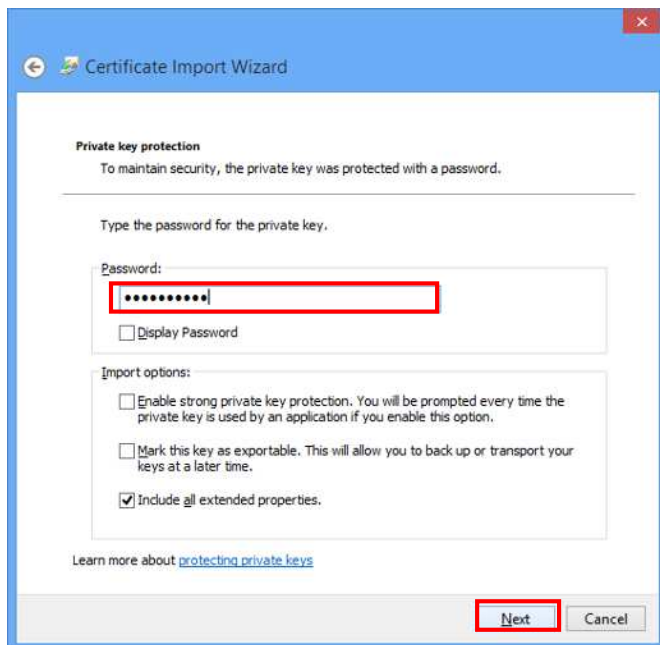


## Windows 8.1

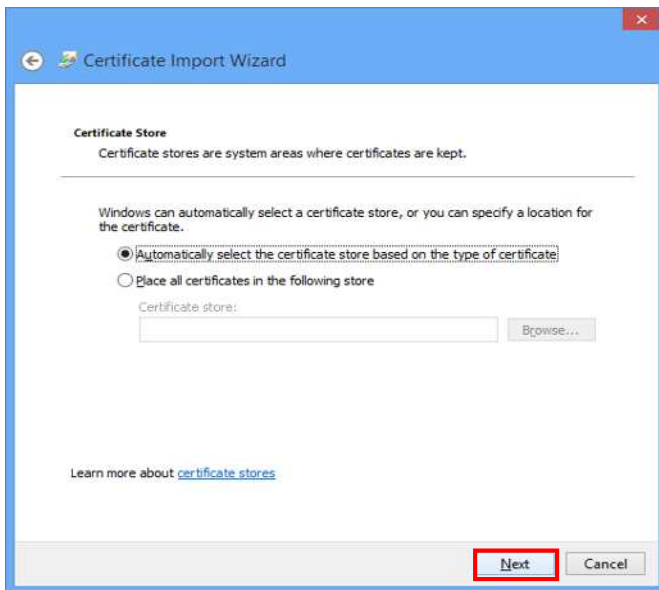
The certificate will be stored in the location specified. Click **Next**.



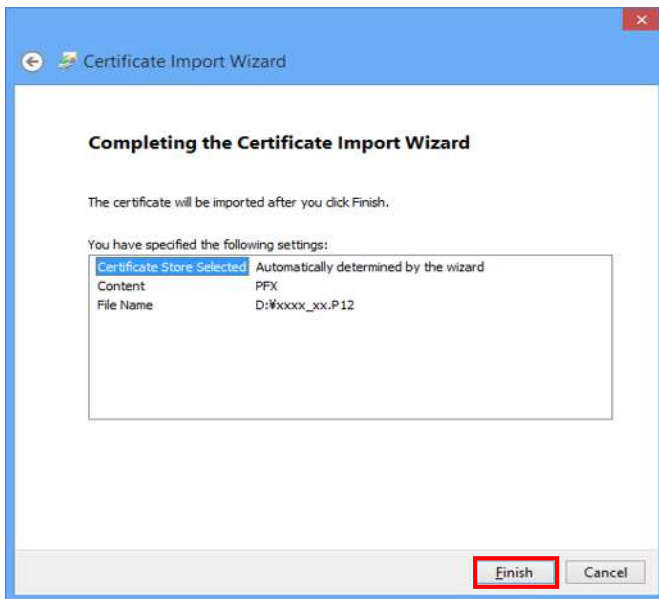
Enter the password you received with the certificate and click **Next**.



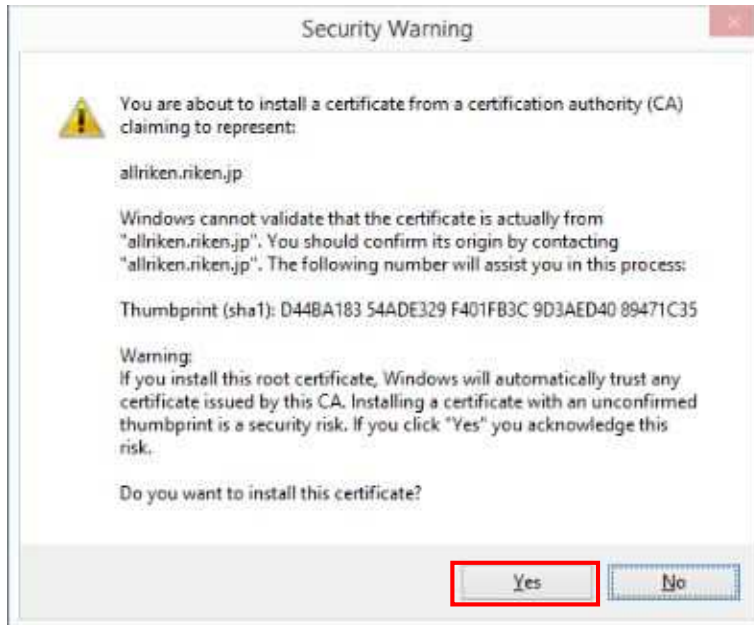
Automatically select the certificate store... should be selected. Click **Next**.



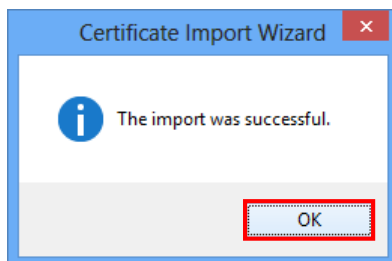
Finish the import wizard by clicking **Finish**.



A **security warning** will appear. Click **Yes**.



The certificate has been imported. Click **OK**.

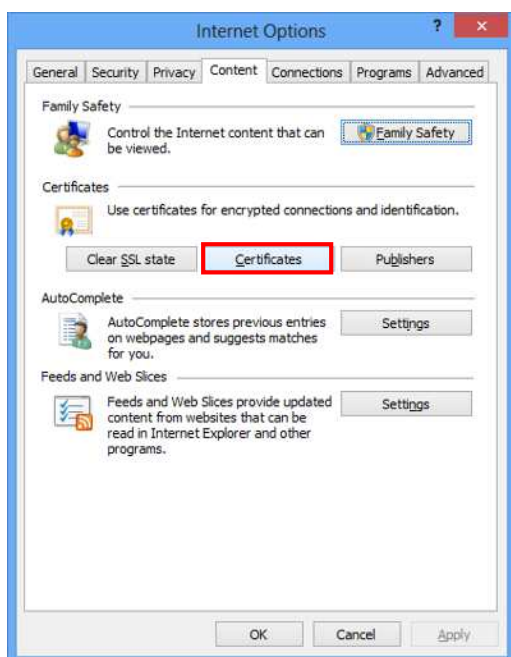


## Client Certificate Delete Manual

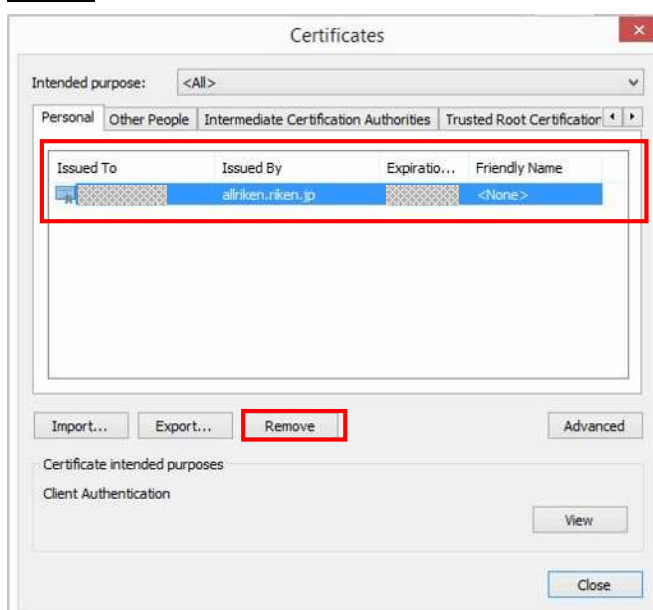
Open Internet Options.

Go to **Settings->Control Panel->Network and Internet Connections** and click **Internet Options**.

Select the **Content** tab and click **Certificates**.

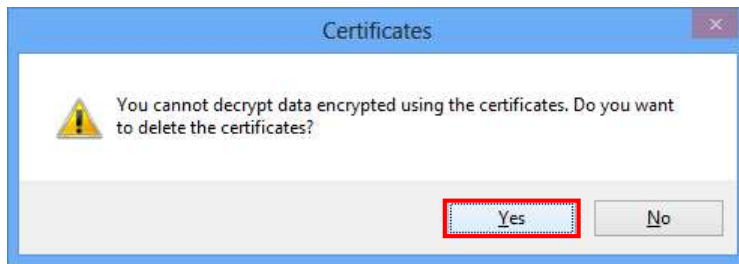


Select the certificate issued by **allriken.riken.jp** in the **Personal** tab, and click **Remove**.



Windows 8.1

Click **Yes**.



## 【Windows 10】

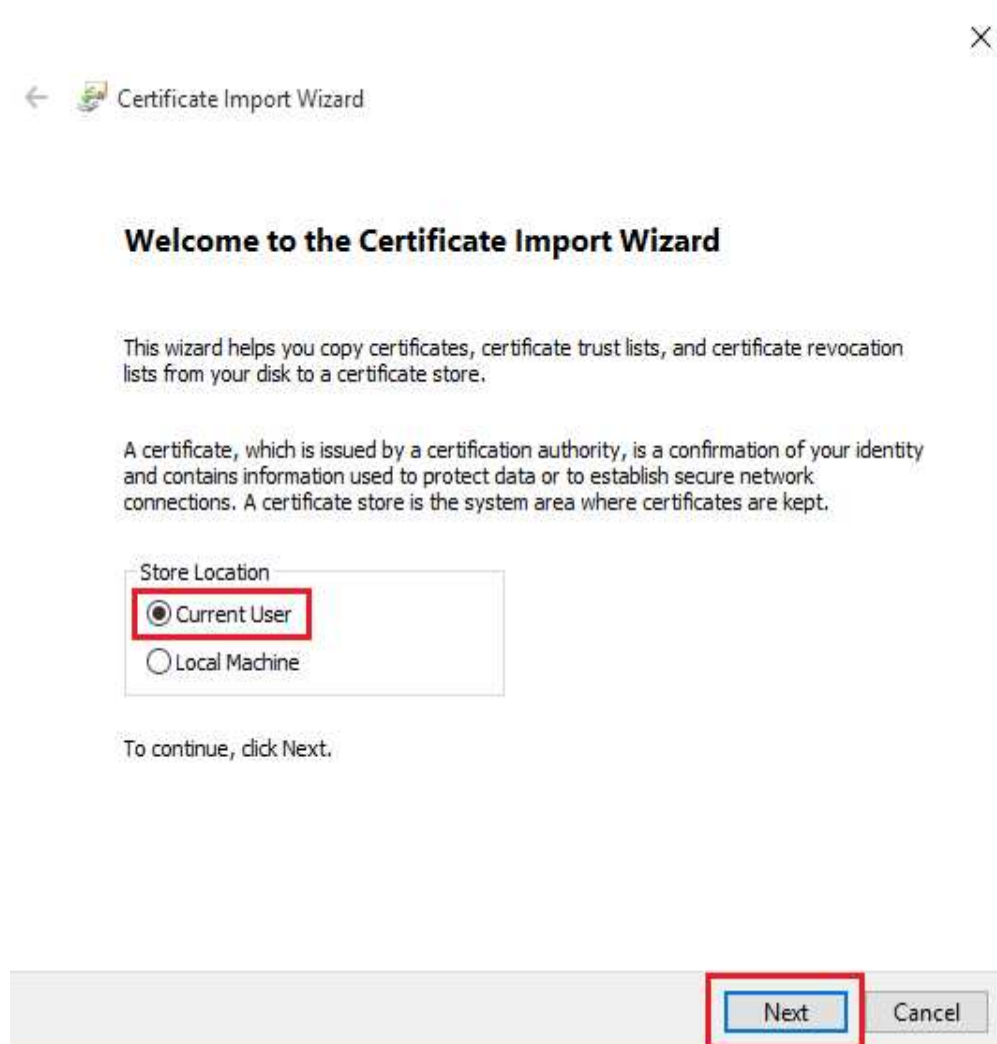
### Client Certificate Import Manual

Double click the certificate file distributed by the administrator.

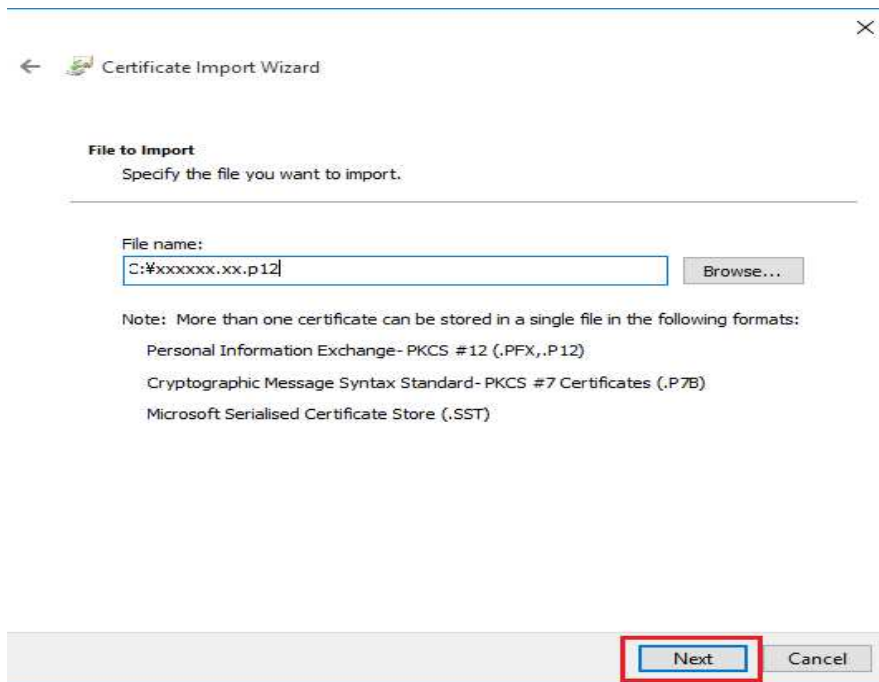


The **Certificate Import Wizard** will appear.

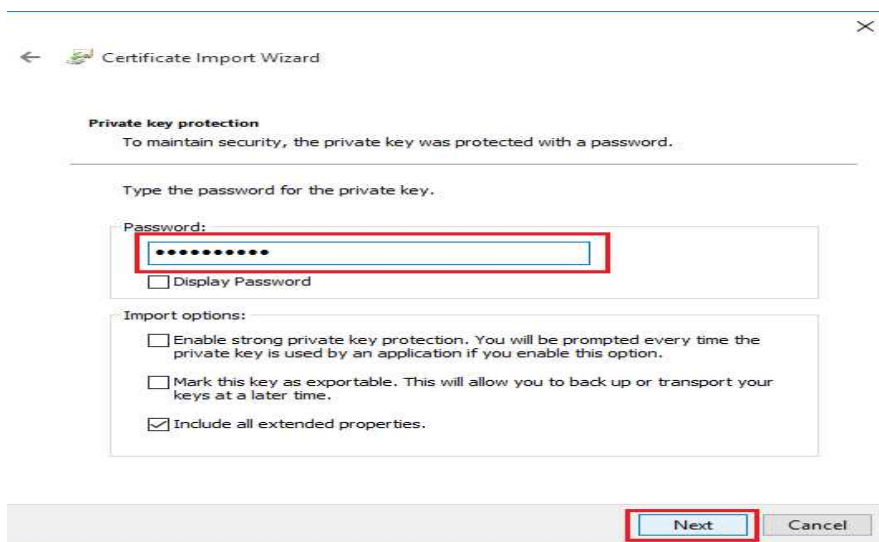
**Current User** should be selected. Click **Next**.



The certificate will be stored in the location specified. Click **Next**.

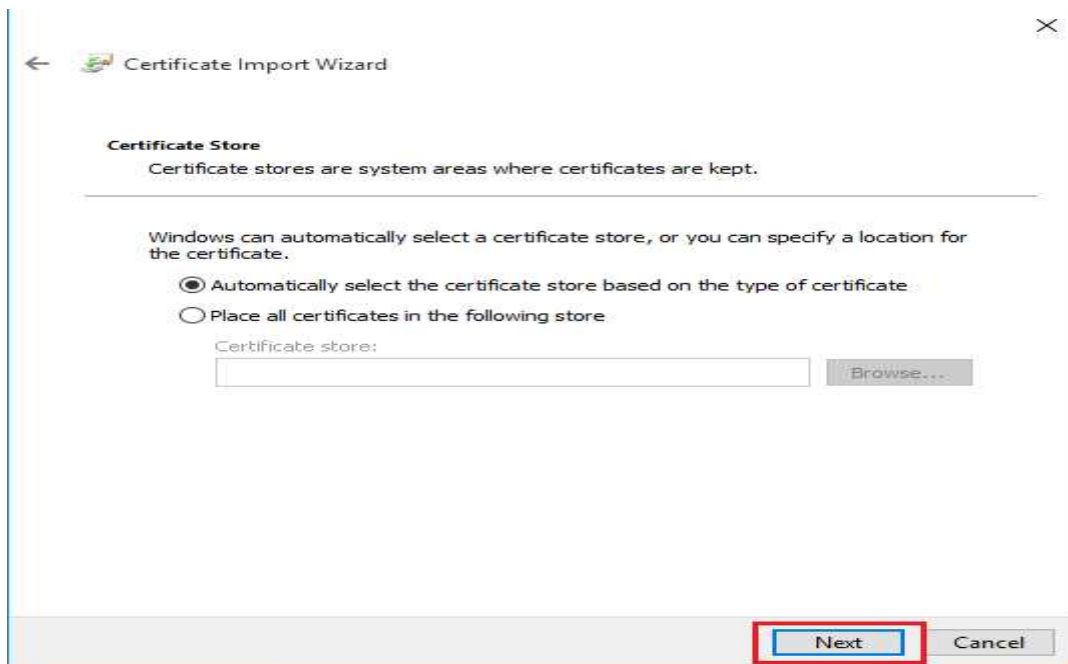


Enter the password you received with the certificate and click **Next**.

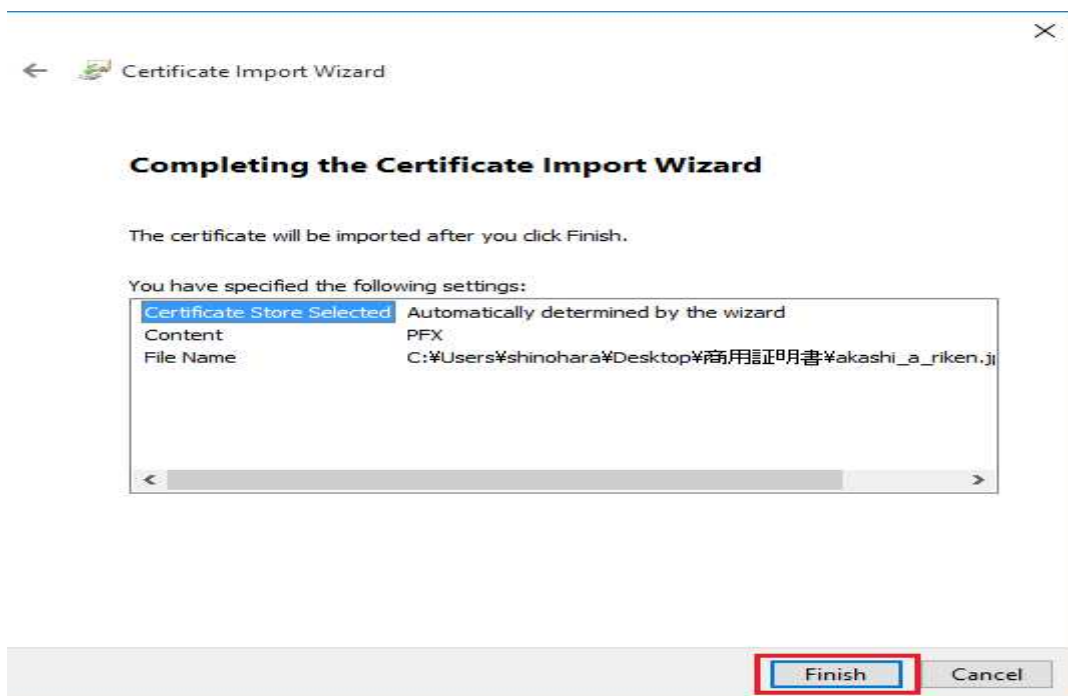




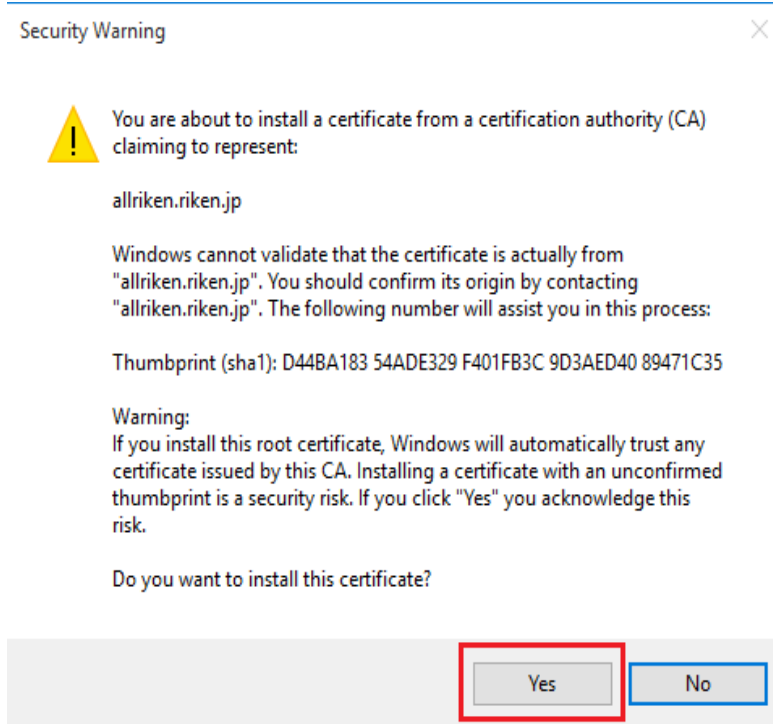
Automatically select the certificate store... should be selected. Click **Next**.



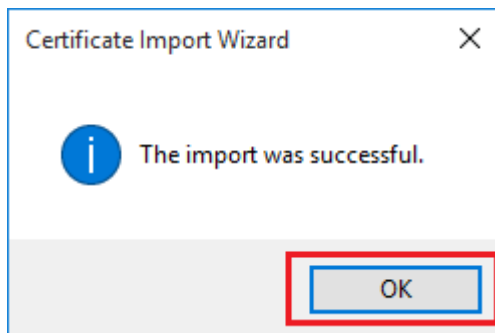
Finish the import wizard by clicking **Finish**.



If the following warning screen appears, please click OK .



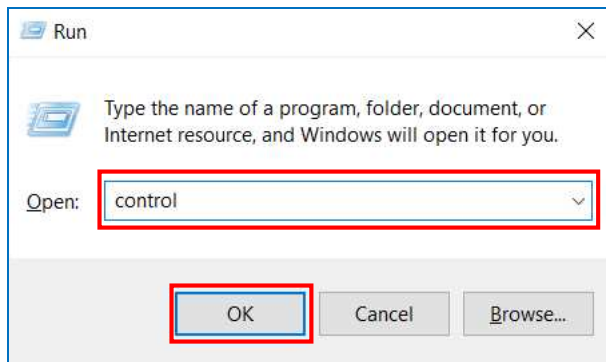
The certificate has been imported. Click **OK** .



## Client Certificate Delete Manual

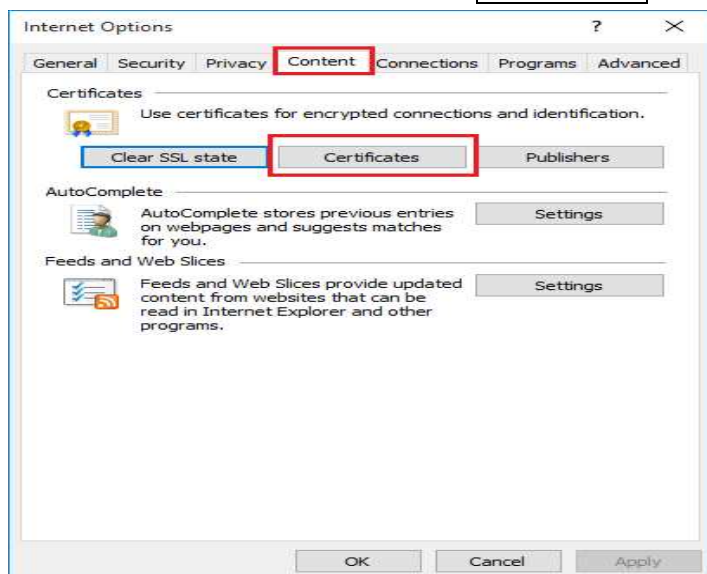
Open Internet Options.

Go to [Windowskey + r] -> Input [control] and click **OK**.

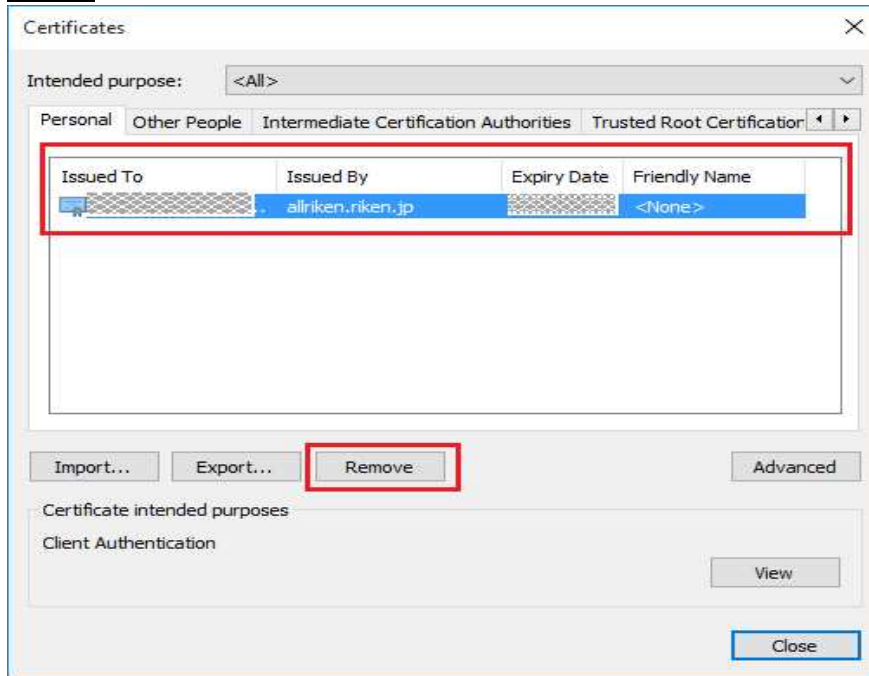


-> [Network and Internet] and click **Internet Options**.

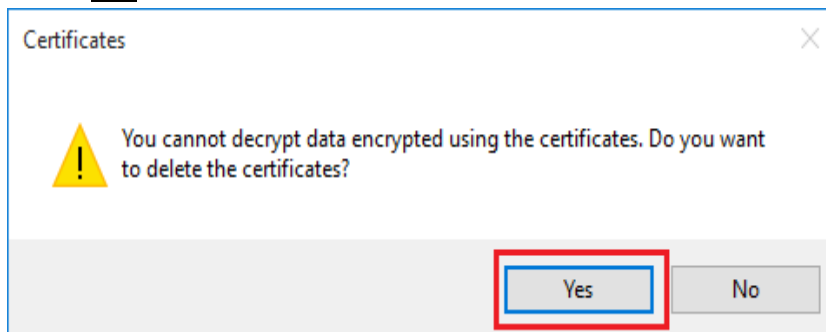
Select the **Content** tab and click **Certificates**.



Select the certificate issued by `allriken.riken.jp` in the **Personal** tab, and click **Remove**.



Click **Yes**.



## 【Mac OS】

### Client Certificate Import Manual

Double click the certificate file (extension.P12) distributed by the administrator.



Enter the password you received with the certificate and click **OK**.

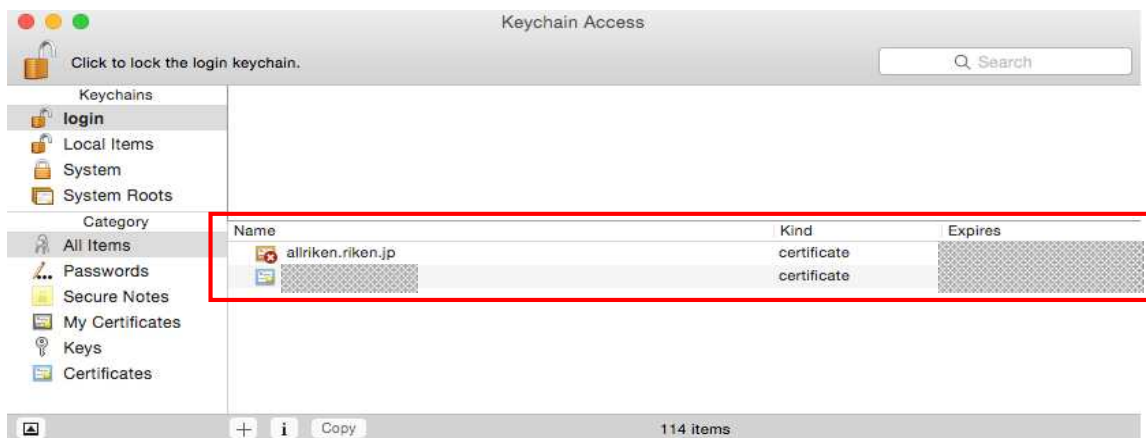
It's complete.



Go to **Finder->Applications->Utilities** and open **Keychain Access**.

Two certificates under **your RIKEN ID or your name** (e.g. taro.riken\_a\_riken.jpXXXX\_YYYY) and **allriken.riken.jp** should be created.

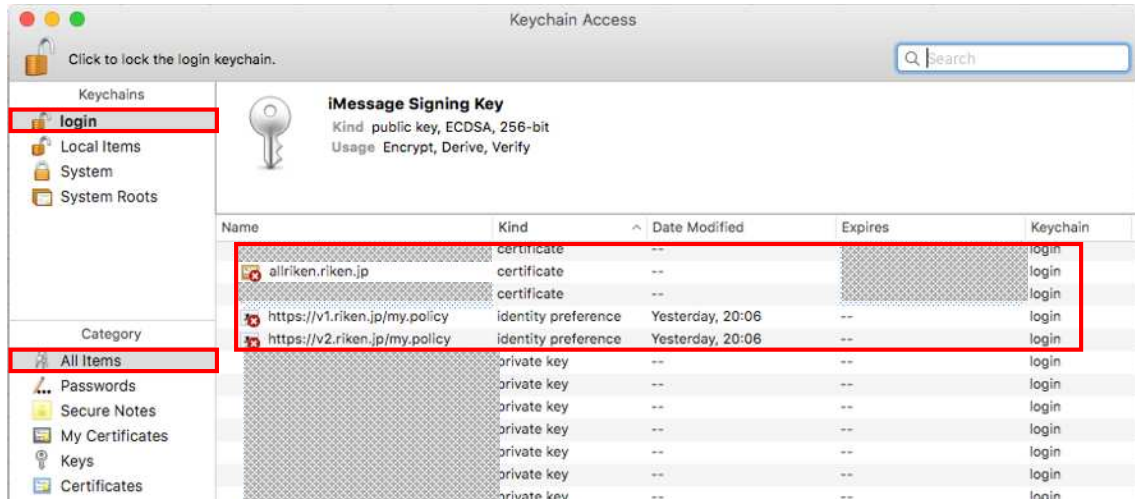
Then importing the Client Certificate is completed.



## Delete Client Certificate and Remove identity preference Manual

Go to Finder->Applications->Utilities->Keychain Access

Select **login** in the Keychains and **All items** in the Category of the left panel.



All items of the keychain are displayed, remove all the following items.

(If only one identity preference was displayed, just delete one identity preference.)

Name	Kind
https://v1.riken.jp/my.policy	identity preference
https://v2.riken.jp/my.policy	identity preference
allriken.riken.jp	Certificate
certificates under your RIKEN ID or your name (e.g. taro.riken_a_riken.jpvXXXX_YYYY)	Certificate